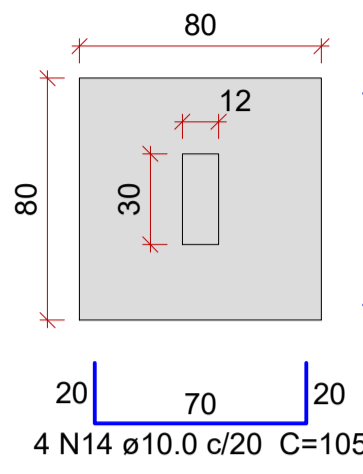


SAPATAS

PLANTA
ESC.: 1:25



Solo com capacidade de suporte > 1.00 kgf/cm²

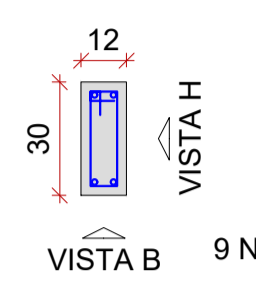
CORTE
ESC.: 1:25



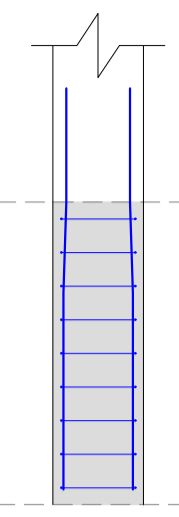
ARRANQUES

BALDRAME - L1

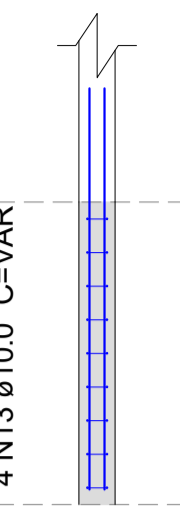
SEÇÃO
ESC.: 1:20



VISTA H
ESC.: 1:25



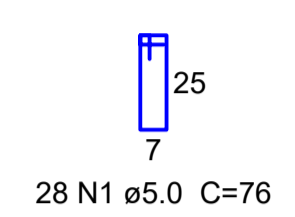
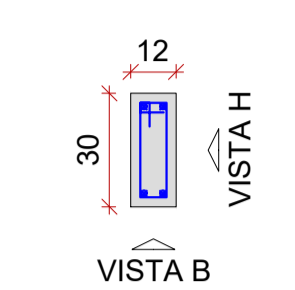
VISTA B
ESC.: 1:25



PILARES

CINTA - L2

SEÇÃO
ESC.: 1:20



BALDRAME - L1

Relação do aço

Baldrame:	12xS1	VB1
	VB2	VB3
	VB4	VB5
	VB6	VB7
	VB8	VB7
Cinta:	12xP1	VC1
	VC2	

AÇO	N	DIAM (mm)	QUANT	C.UNIT (cm)	C.TOTAL (cm)
CA60	1	5.0	591	76	44916
CA50	2	10.0	8	258	2064
	3	10.0	4	249	996
	4	10.0	12	50	600
	5	10.0	4	780	3120
	6	10.0	4	744	2976
	7	10.0	12	248	2976
	8	10.0	8	238	1904
	9	10.0	48	327	15696
	10	10.0	48	VAR	VAR
	11	10.0	96	105	10080

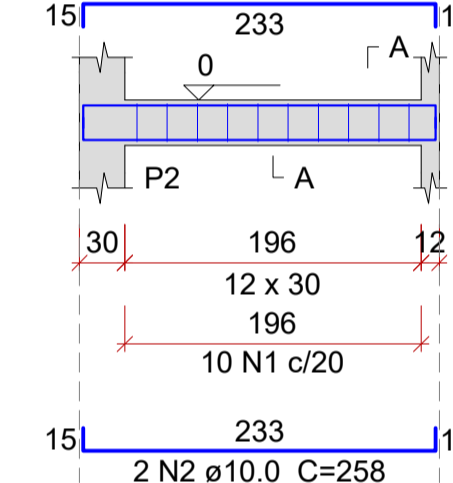
Resumo do aço

AÇO	DIAM (mm)	C.TOTAL (m)	QUANT (Barras)	PESO (kg)
CA50	10.0	476.6	40	293.8
CA60	5.0	449.2	38	69.2
PESO TOTAL (kg)				
CA50				293.8
CA60				69.2

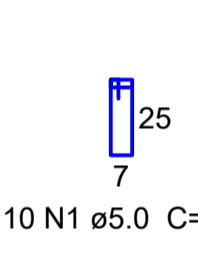
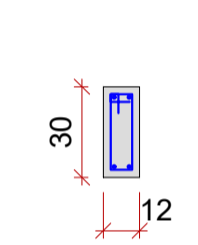
Volume de concreto (C-25) = 5.04 m³
Área de forma = 72.09 m²

VB1 (12 x 30)

ESC.: 1:50

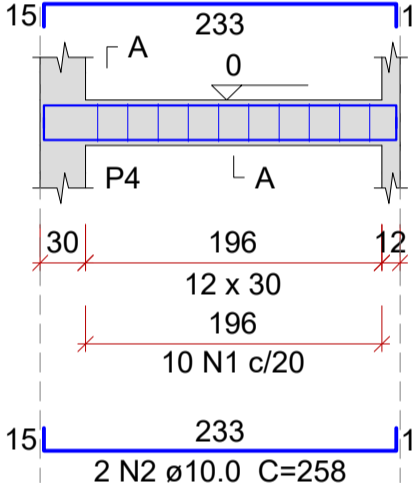


SEÇÃO A-A
ESC.: 1:25

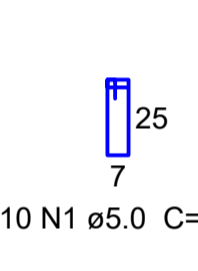
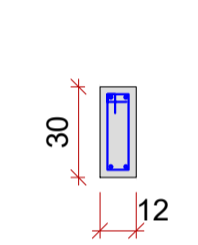


VB2 (12 x 30)

ESC.: 1:50

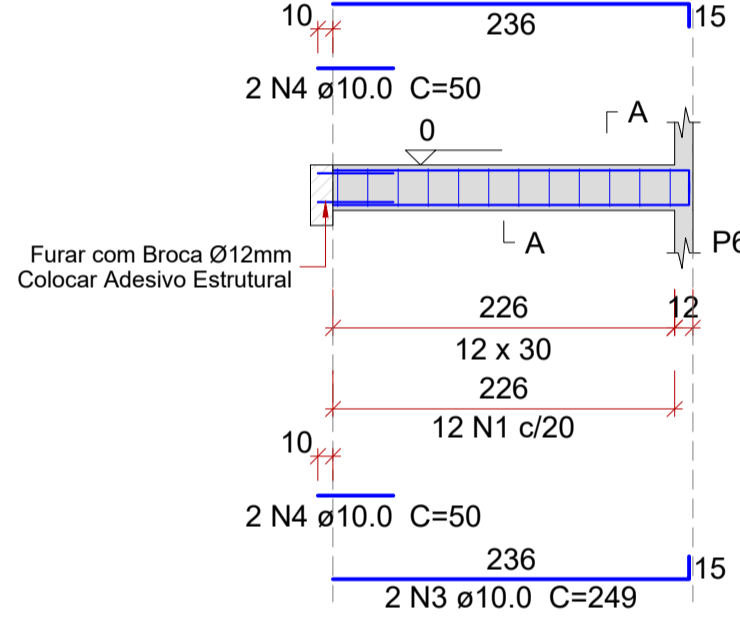


SEÇÃO A-A
ESC.: 1:25

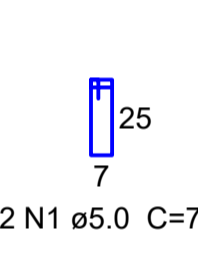
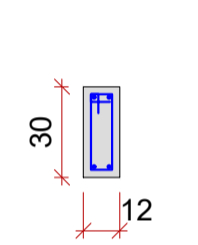


VB3 (12 x 30)

ESC.: 1:50

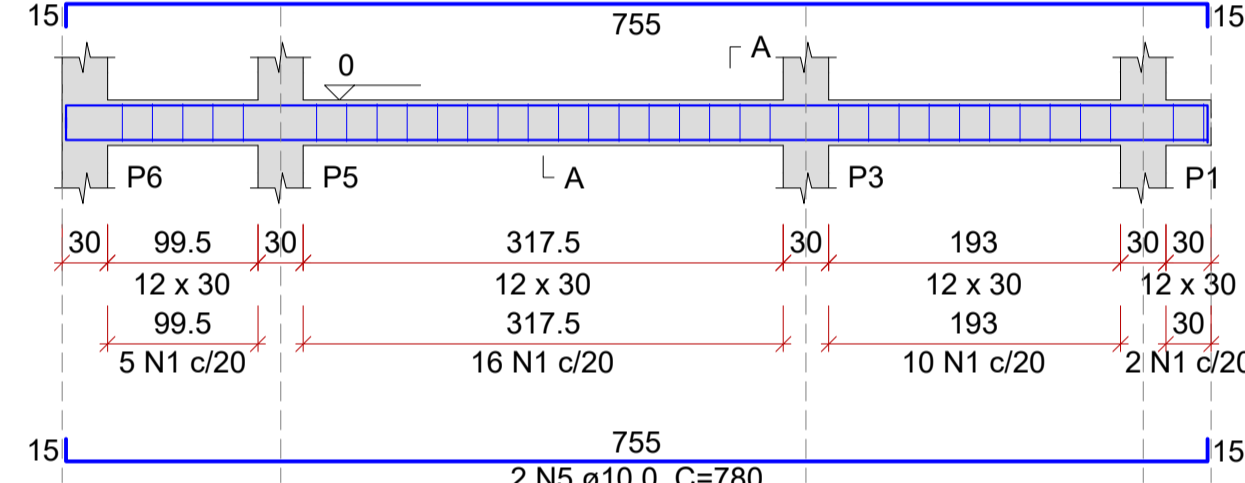


SEÇÃO A-A
ESC.: 1:25

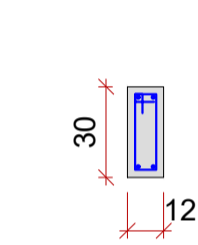


VB4 (12 x 30)

ESC.: 1:50

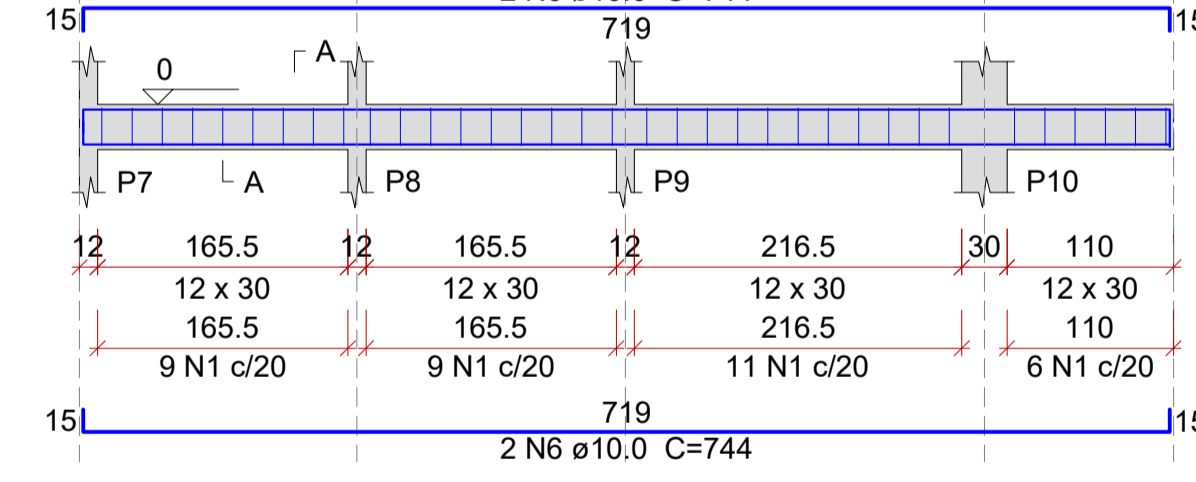


SEÇÃO A-A
ESC.: 1:25

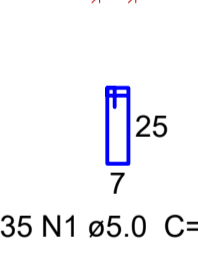
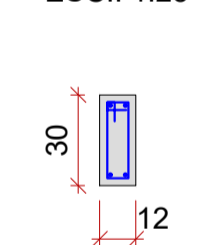


VB5 (12 x 30)

ESC.: 1:50

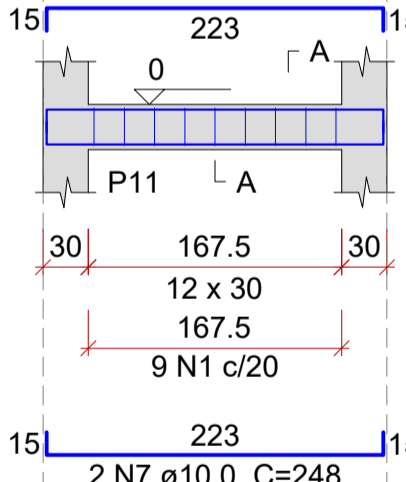


SEÇÃO A-A
ESC.: 1:25

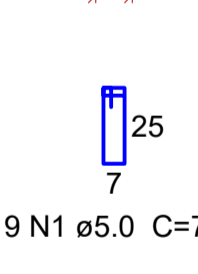
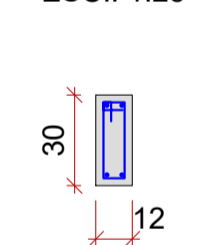


VB6 (12 x 30)

ESC.: 1:50

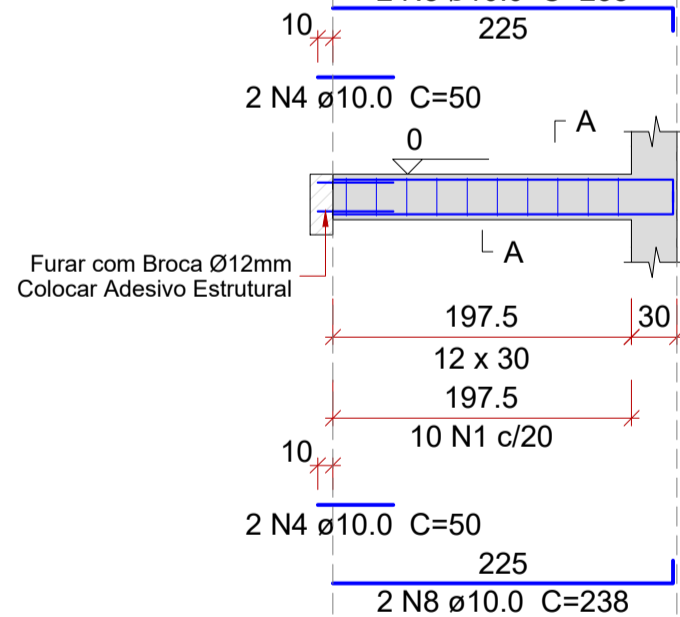


SEÇÃO A-A
ESC.: 1:25

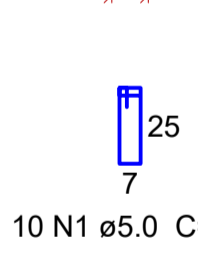
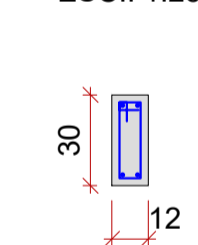


VB7 (12 x 30)

ESC.: 1:50

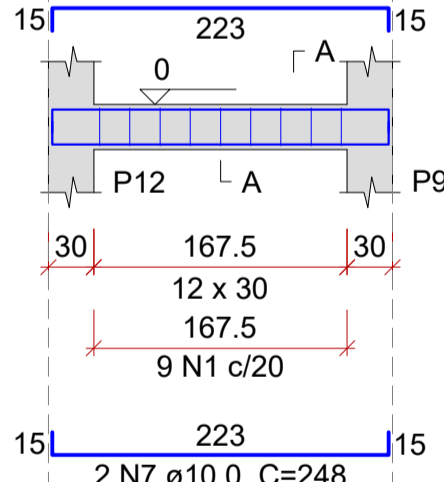


SEÇÃO A-A
ESC.: 1:25

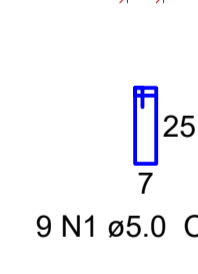
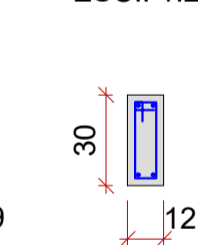


VB8 (12 x 30)

ESC.: 1:50

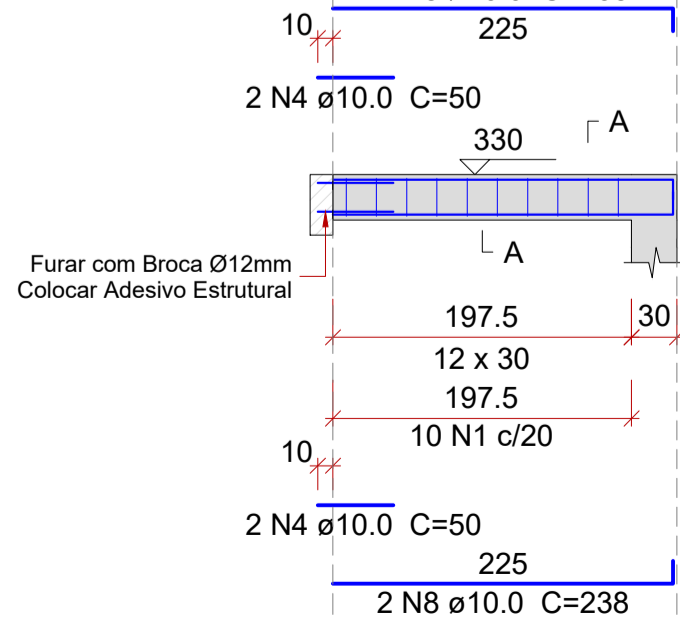


SEÇÃO A-A
ESC.: 1:25

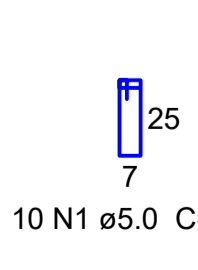
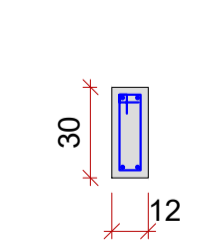


VC1 (12 x 30)

ESC.: 1:50

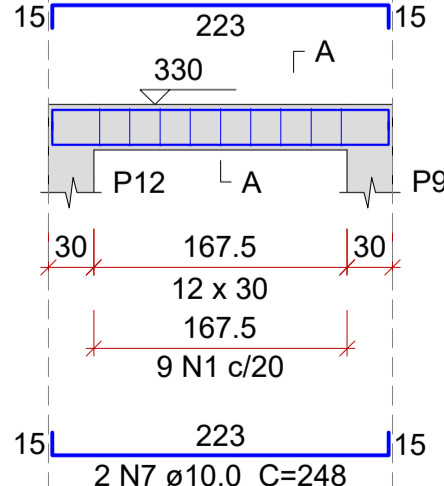


SEÇÃO A-A
ESC.: 1:25

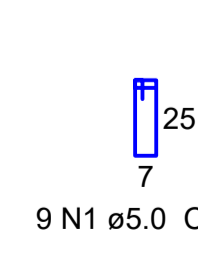
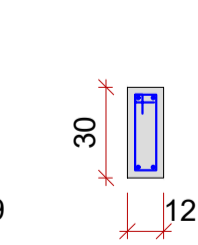


VC2 (12 x 30)

ESC.: 1:50



SEÇÃO A-A
ESC.: 1:25



DETALHAMENTO ELEMENTOS ESTRUTURA PRANCHA 01

ESCALA INDICADA

REVISÃO:	DATA:	DESCRIÇÃO:
R00	12/2022	EMISSÃO INICIAL
R01	03/2023	REMOÇÃO DOS COBOGÓS
CARIMBOS E APROVAÇÕES:		
		
PROPRIETÁRIO / CONTRATANTE:		ASSINATURA:
PREFEITURA MUNICIPAL DE ATALANTA CNPJ: 83.102.616/0001-09		
RESPONSÁVEL TÉCNICO PROJETO:		ASSINATURA:
EDUARDO FRANCISCO SILVA DE FIGUEIREDO ENGENHEIRO CIVIL - CREA: 187051-8-SC		
PROJETO: ESTRUTURAL		
OBRA: CANCHA DE BOCHA		
LOGRADOURO: ESTRADA RIBEIRÃO MATILDE	BAIRRO: RIBEIRÃO MATILDE	Nº: S/N
MUNICÍPIO: ATALANTA	UF: SC	CEP: 88410-000
ÁREA DA EDIFICAÇÃO: 332,17 m ²		
CONTEÚDO: DETALHAMENTO DOS ELEMENTOS ESTRUTURAIS - PRANCHA 1	ESCALA: INDICADA	DATA: DEZ/2022
	CÓDIGO AMAVI: 3037	DESENHISTA: EDUARDO FIGUEIREDO
EST02/04		

TODOS OS DIREITOS RESERVADOS. PROIBIDA A REPRODUÇÃO PARCIAL OU TOTAL. DESENHO VÁLIDO SOMENTE ASSINADO PELO RESPONSÁVEL DO PROJETO.